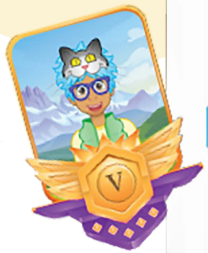


Mathletics

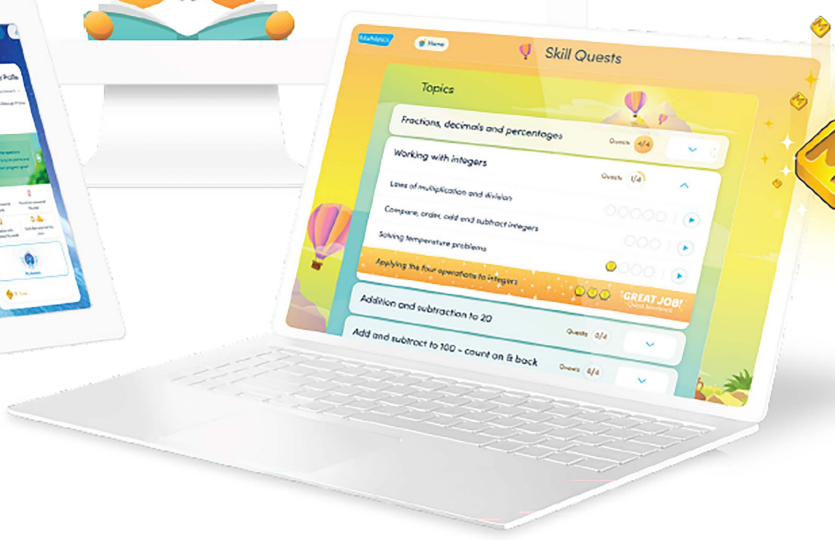
# Mathletics Summer Challenge



Reporting Skill Quizzes Mastery

All classes 10 January 2024 - 12 January 2025

	81.08%	41.80%	41.82%	24.42%	1.20%	Showing master award criteria	Export
	STANDARDS IN PROGRESS	STANDARDS COMPLETED	MISSING QUESTS	COMPLETED QUESTS			
All classes	0%	0%	0	0	0		
Sample Class	0%	0%	0	0	0		



# Mathletics

## Mathletics Summer Challenge

We're excited that you're going to be participating in the Mathletics Summer Challenge with us!

You'll get the chance to complete activities and games that interest you and tackle some fun weekly challenges that you can do on your own or with your family/friends/caregiver. Your only mission this summer is to enjoy exploring math and other subjects that you are interested in and enjoy!

Remember, you're leading this challenge, and get to decide how to run it. Good luck! We can't wait to hear how your journey goes. Your [math journal](#) allows you to reflect on what you've done and keep track of what you loved. We would love if you shared your work with us! Send us how you worked out your challenges using your [challenge tracker](#).



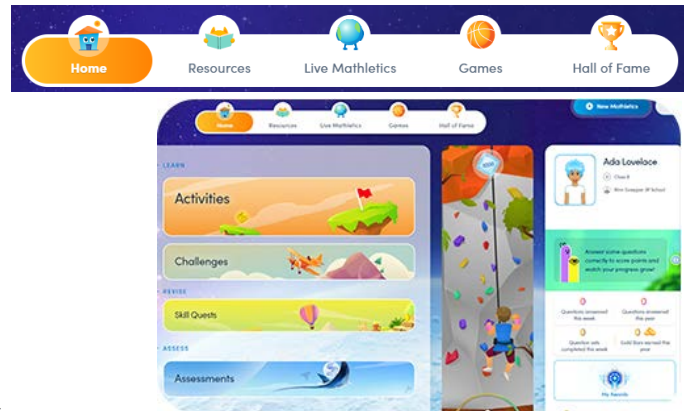
# Week 1

# Mathletics

The first step to getting started is learning how to navigate **Mathletics**. You'll need to log in to check out the **games, activities, and videos** you have access to. Just follow the instructions below to get started! Don't forget to fill out your **math journal** and your **challenge tracker** (click on the titles to download).

**Log in – [login.mathletics.com](https://login.mathletics.com)**

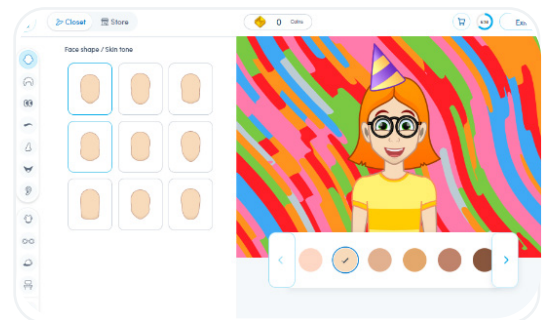
Here is a list of the program areas:



- **Click Home in the navigation bar.**  
You'll find Activities, Challenges, Skill Quizzes, and Assessments.
- **Click Live Mathletics in the navigation bar.**
- **Click Games in the navigation bar.**  
You'll find Meritopia, Multiverse, and Rainforest Maths. Earn 200 points to begin exploring the world of Meritopia.
- Design an avatar as unique as you are. Click on your profile picture.

**Let's test your skills!**

- **Skill Quizzes to complete.**
- Click **Home**
- Click **Skill Quizzes**  
Select the Quest  
Now select the activity



Challenge players around the world in Live Mathletics games.

You choose your level!

- Click on **Live Mathletics**  
Keep track of what countries you are playing against in your math journal.



**Complete Week 1 [Math Journal](#)**

## WEEK 1 CHALLENGE

Choose one of the countries you played against during your Live Mathletics game. If you wanted to visit this country, how would you get there? Car, train, airplane, another way? How long would it take you to get there? Once you've made your guesses, do some research to see how close you were. Make sure to explain how you tackle this challenge!

# Week 2

# Mathletics

This week is full of opportunities to explore each area of the program. Let's get started!

## Which Skill Quests are you going to explore now?

Select 3-5 to complete.

- Click **Skill Quests**
- Select the Topic
- Now select the Activity

The more activities you complete, the more points you earn. Remember, 1000 points in a week earns you a certificate and you can use them to shop for your avatar.

Try 3-5 new activities you might enjoy.

- Click **Activities**
- Choose a topic and then select Activities

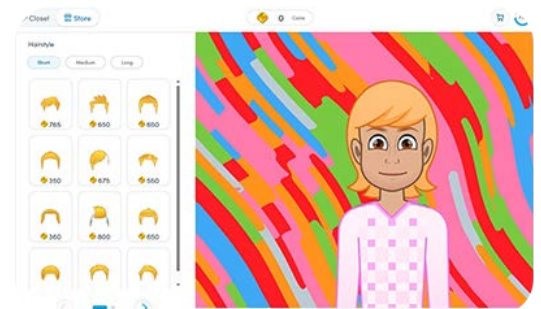
Now it's time for Challenges. Once you choose your challenges for this week, think about what you like about the questions. Did you like them more or less than the ones you did last week?

- Click **Challenges**
- Choose a challenge that interests you

## Avatar Shopping

How many credits do you have this week? What do you want to buy? Do you have enough credits? If not, you can always earn more by completing extra activities and quests.

Complete Week 2 [Math Journal](#)



## WEEK 2 CHALLENGE

What is your favourite physical activity? Is it football, badminton, rugby, tennis, or something else? It can be any physical activity that you enjoy - even just running around! How do you do the activity and do you earn points? Tell us all the ways you use or could use math in the activity. Don't forget to take a picture of you doing the activity and document in your [challenge tracker](#).

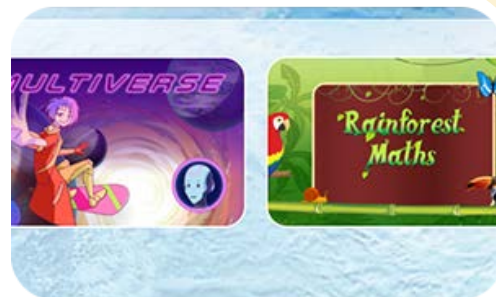
# Week 3

## Mathletics

Do you want to start with some games? Before you decide on what Skill Quests, Activities, and Challenges to do this week, try spending some time in the Games section of Mathletics, or play some Live Mathletics!

You have a bunch of games to choose from.

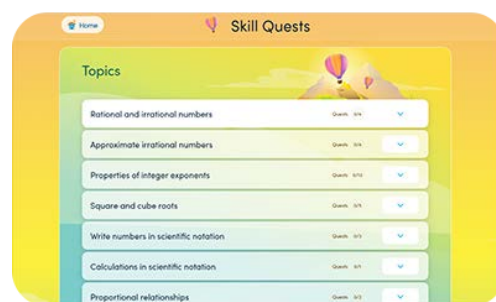
- Live Mathletics
- Multiverse
- Rainforest Maths



Remember, the games you play are up to you! Just have fun.

Time to choose your Skill Quests for the week! Here's a reminder of where to go:

- Click **Home**
- Click **Skill Quests**
- Select the Quest
- Now select the activity



Maybe try a different topic this week.

Once you decide, complete 3-5 activities in the new topic.

- Click **Home**
- Click **Activities**
- Choose a topic and complete 3-5 activities



Let's have some fun in Meritopia!

The world of Meritopia will unlock once you've earned enough points. Check the meter on the right to see how many points you need before you can explore.

- Click on the door below **Meritopia**
- Have fun!



Complete Week 3 [Math Journal](#)

### WEEK 3 CHALLENGE

What is the biggest thing you can measure in or outside of your home? How are you going to measure it? What is your guess on how big it will be? Now pick something really small, and do the same. Ask your family to join in. See who is the closest with their estimates. Make sure to explain how you tackle this challenge!

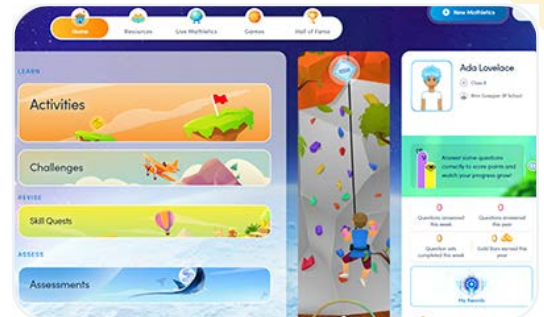
# Week 4

## Mathletics

This week it's all about doing what you love in math! You can choose your favourite areas of Mathletics this week. Play games and complete activities, skill quests, and challenges in any order you want. Most importantly, just sign in and have fun! Don't forget your [weekly challenge](#) and [Math Journal](#).

Complete 6-8 assignments in any of these areas.

- Skill Quests
- Challenges
- Activities



Play 5-10 rounds of any of these areas

- Live Mathletics
- Multiverse
- Rainforest Maths



Complete Week 4 [Math Journal](#)

### WEEK 4 CHALLENGE

What do you think of when you think of math? What are some things you use math for outside of school (shopping, recipes, building something...)? Now take what you thought about and make a poster representing math. You can draw, print, colour, paint, or glue things onto your poster. Make sure to explain what your poster represents!



**Congratulations! Your mission was to find what you love about math, have fun, and show your creativity in how you tackled the different challenges. We can't wait to share all your amazing accomplishments. We'd love to see your challenges and your reflective journals. Don't forget, you and your parent(s)/carer(s) need to sign and send in the release form so we can share your work and show other students how FUN math is! And don't forget to share your adventures with your teacher!**

We created a Parent Pack with a few tips & tricks to help you feel comfortable supporting your child with Mathletics at home. You can also check out our [Parent Tour video](#).



Parent Pack



Parent Tour

You'll also want to download and print your child's [Challenge Tracker](#) and [Summer Journal](#) so they can keep track of their journey.



Challenge Tracker



Summer Journal

We would love to see your child's progress and how they tackle the challenges and share them with the other kids around the world! Please complete the [release form](#) at the end of this package and send it back to [support@3plearning.com](mailto:support@3plearning.com) along with whatever stories or photos you'd like to share.

If you have any questions throughout the summer months as your child works through their Summer Challenge, our Customer Service team is here to help! You can reach them at +1 877 467 6851 or [support@3plearning.com](mailto:support@3plearning.com).

# Written Testimonial, Photograph & Video Release Form



I hereby grant 3P Learning Limited and each of its related group entities (collectively “3PL”) and its agents or employees, permission to use my image, testimonials, likeness and/or video and audio taken of me for educational, documentary and commercial materials and in both printed and online 3PL newsletters and newspapers. Furthermore, I authorise the use of my image, likeness and voice for all program promotion, materials, and any other purposes in connection with 3PL as deemed appropriate and necessary by 3PL. I understand that my image, likeness, testimonials, and voice may be edited, copied, exhibited, published or distributed and I waive the right to inspect or approve the finished product wherein my likeness appears.

I hereby agree to release, defend, and hold harmless 3PL and its agents or employees, including any company publishing and/or distributing the finished product in whole or in part, whether on paper, via electronic media, or on websites, from any claim, damages, or liability arising from or related to the use of the photographs/video, including but not limited to any misuse, distortion, blurring, alteration, optical illusion or use in composite form, either intentionally or otherwise, that may occur or be produced in taking, processing, reduction, or production of the finished product, its publication, or distribution. There is no time limit on the validity of this release nor is there any geographic limitation on where these materials may be distributed.

By signing this form, I acknowledge that I have read this release before signing below, fully understanding the contents, meaning, and impact of this release. I understand that I am free to address any specific questions regarding this release by submitting those questions in writing prior to signing, and I agree that my failure to do so will be interpreted as a free and knowledgeable acceptance of the terms of this release.

FULL NAME			
ADDRESS		CITY	
PROV		POSTAL CODE	
PHONE		FAX	
EMAIL ADDRESS			
SIGNATURE OF STUDENT		DATE	
If the Signee (student) is under the age of 19, then the signature of a parent or legal guardian and his/her school teacher or principal is also required.			
PARENT OR LEGAL GUARDIAN SIGNATURE		DATE	
TEACHER OR PRINCIPAL SIGNATURE		DATE	

**CANADA**

1100 – 550 11 Ave SW  
Calgary, AB, T2R 1M7  
Ph: 1 877 467 6851

**USA**

37 W 26th St Suite 408,  
New York, NY 10010-1144  
Ph: 1 866 387 9139

**AUSTRALIA**

Level 5, 124 Walker Street,  
North Sydney, NSW 2060  
Ph: 1300 850 331

**NEW ZEALAND**  
Ph: 0800 375 327

**UNITED KINGDOM**

Redwood House,  
65 Bristol Road, Keynsham,  
Bristol, BS31 2WB  
Ph: +44 117 370 1990